

Patient addressograph

Allergy status:

CLINICAL GUIDELINES ID TAG	
Title:	GTN INFUSION PROTOCOL
Author:	DR M CONNOLLY
Speciality / Division:	MEDICINE
Directorate:	CARDIOLOGY
Date Uploaded:	5 <sup>TH</sup> AUGUST 2020
Review Date	Initial: 3 <sup>RD</sup> AUGUST 2023 Extended: 1 <sup>ST</sup> JAN 2027
Clinical Guideline ID	CG0717[1]

Patient addressograph

Allergy status:

# GTN infusion protocol

## Presentation:

- GTN 50mg in 50mls vials.

## Indication:

- Used for cardiac chest pain, uncontrolled hypertension and acute aortic dissection.

## Prescription:

- Indicate on Kardex that GTN-infusion is being used.

Date	Time	GTN batch number	Prepared by	Checked by

## Method of administration:

- Prepare infusion by drawing up 50mls of GTN (1mg/ml) into a 50ml syringe and administer via infusion pump. **Do not transfer to an infusion bag.** Discard any unused portion after 24 hours.
- Record baseline observations of blood pressure (BP) and heart rate (HR).
- The initial infusion rate should be set at 0.5mL/hour unless otherwise instructed by medical staff.
- Observe the patient for the first 5 minutes to watch for signs of sensitivity (hypotension, pale, dizziness, unwell).
- Adjust the infusion rate according to the guidance in the flowchart overleaf.

Patient addressograph

Allergy status:

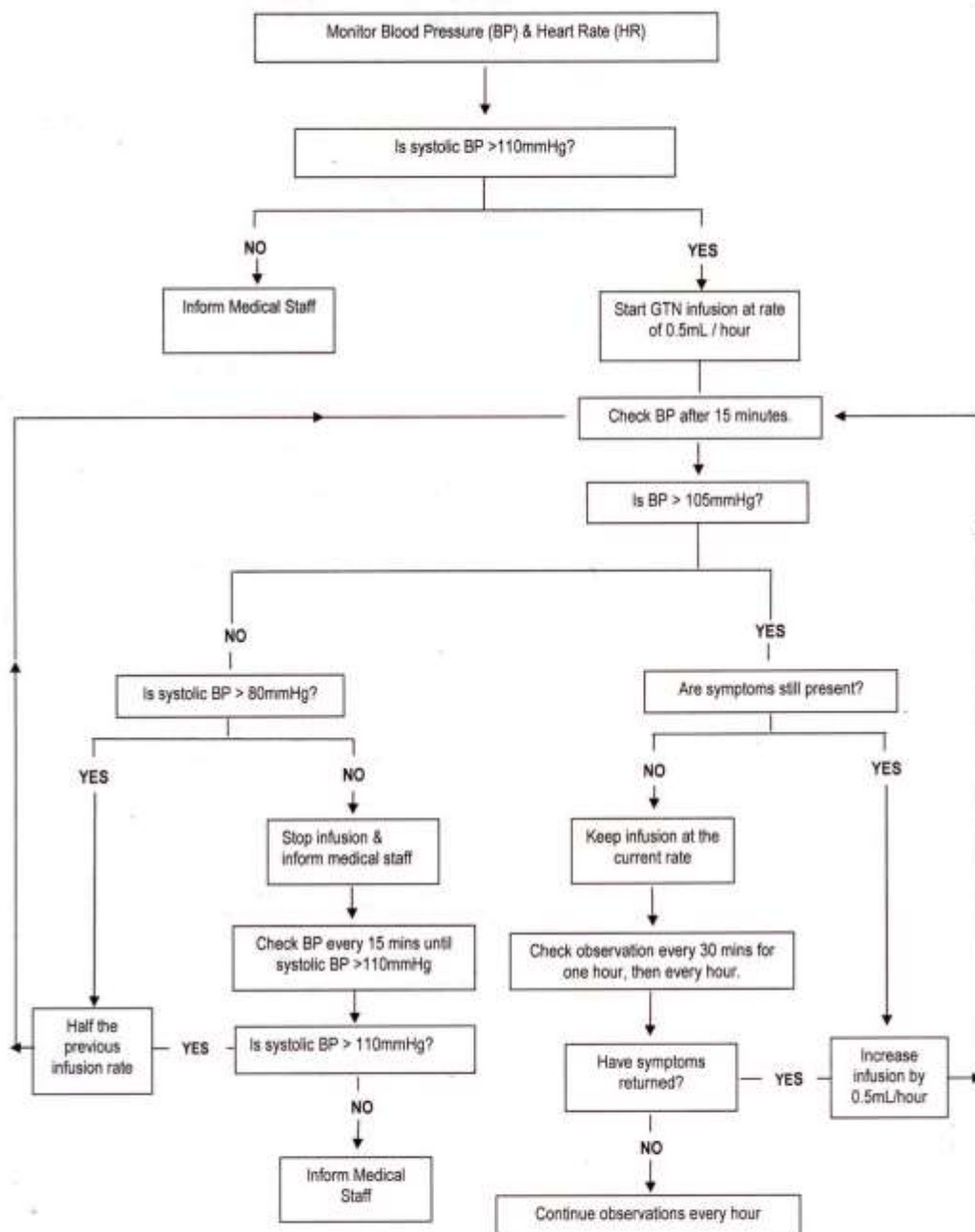
- Re-check observations and symptoms 15 minutes after starting the infusion and after each infusion rate change.
- If infusion rate is not changed, re-check observation and symptoms every 30 minutes for the first hour and then every hour.
- If the infusion is reduced or stopped due to a low BP and the patient is still showing symptoms, inform medical staff.
- If infusion rate is to be increased, increase by increments of 0.5mls/hour (e.g. 1.0mls/hour, 1.5mls/hour, 2.0mls/hour etc).
- Check the residual (volume remaining in the syringe) at least every hour.
- When the infusion is to be discontinued, reduce the rate by 0.5mL/hour every hour until stopped.
- Inform medical staff if systolic BP falls below 80mmHg.

Observations								
Monitoring					Administration record			
Date	Time	BP	HR	Symptoms (Y/N)	Rate (mls/hr)	Residual volume	Nurse signature	Nurse signature

Patient addressograph

Allergy status:

Prescribing guidelines:



Signed:

Dr David Mc Eneaney  
Consultant cardiologist

Dr Mick Connolly  
Consultant cardiologist

Sharon Brownlee  
Pharmacist